

# Common Areas at the Heart

George Dinwiddie

*Software Development Consultant and Coach*

iDIA Computing, LLC

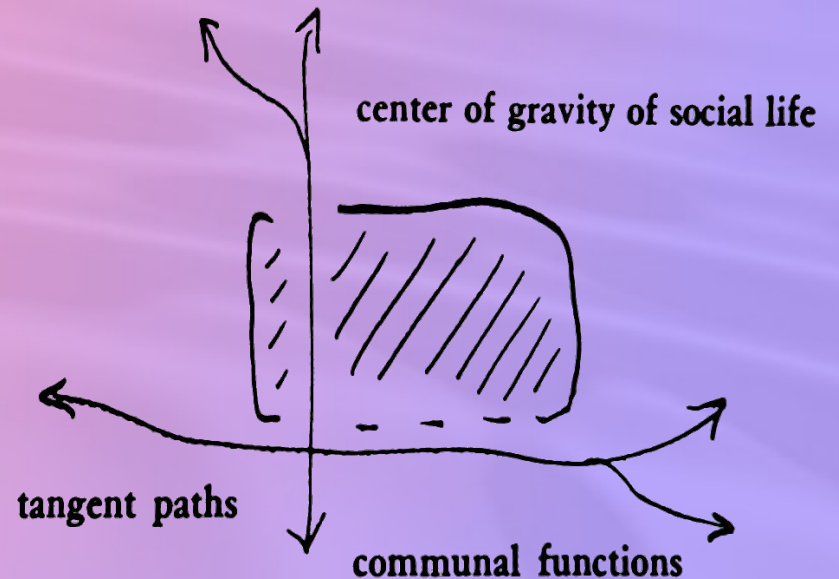
<http://idiacomputing.com/>

<http://blog.gdinwiddie.com/>



# Common Areas at the Heart

“No social group—whether a family, a work group, or a school group—can survive without constant informal contact among its members.”



Christopher Alexander  
*A Pattern Language*







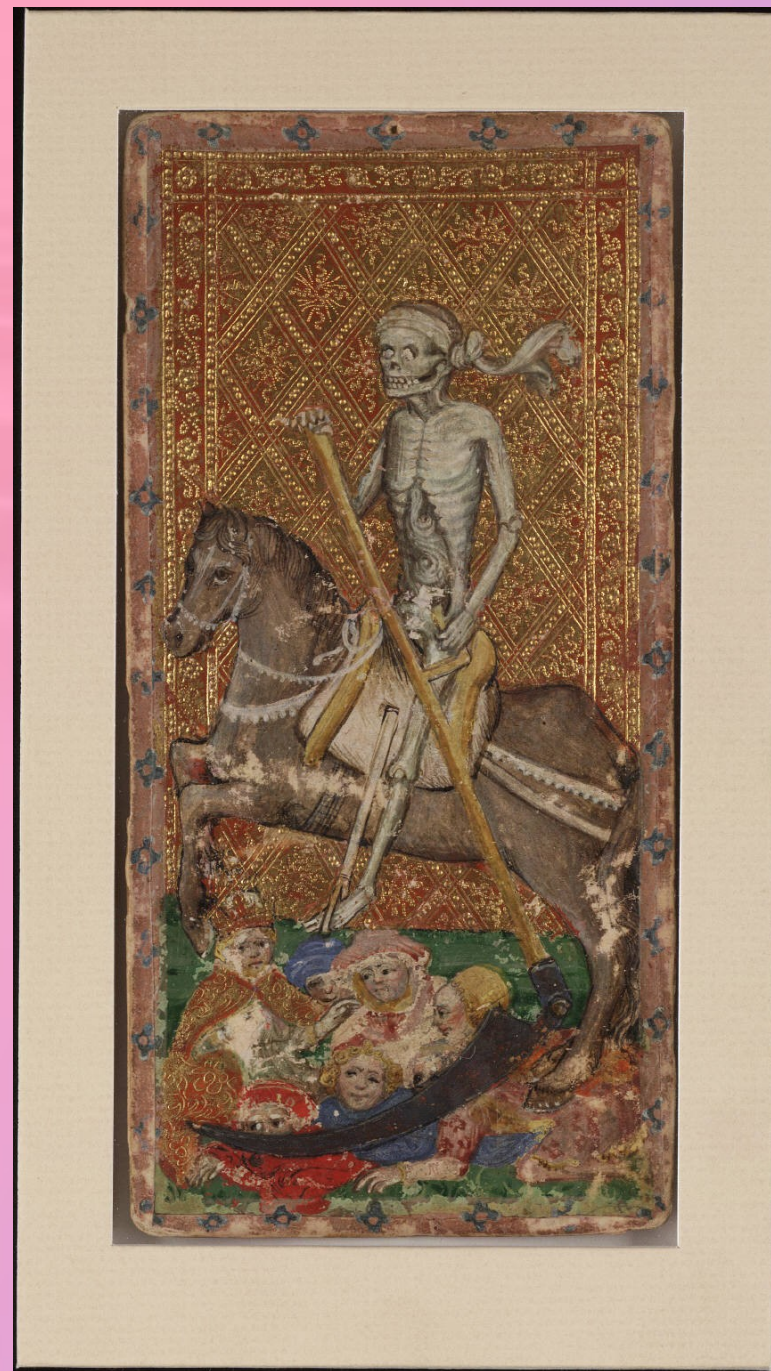


“A jelled team is a group of people so strongly knit that the whole is greater than the sum of the parts.”

Peopleware (2<sup>nd</sup> ed.)  
Tom DeMarco & Timothy Lister





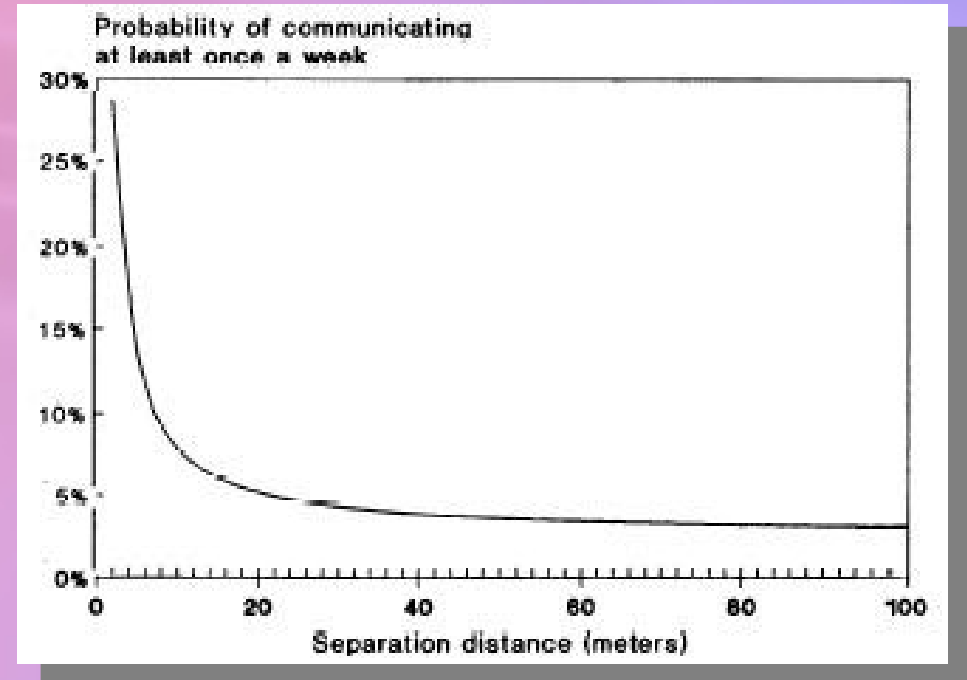


# A Short Distance is a Long Way

“A study in 1977, researching the effect of distance on technical communication, found that the probability of communication rapidly decreases within the first ten meters.”

-- Kenneth Crow

<http://www.npd-solutions.com/collocation.html>



“What data do you need for this screen? What actions can be called from it?”

“Does this total include the discounts? Can I just display it without calculations?”







“Wait, are you two  
talking about ...

I think what the  
business really wants  
is ...

Let's check that out.”



# Working in the Team Room

- Getting things *done*
  - by working feature at a time, together
- Doing things *right*
  - by frequent and pervasive design discussions
- Doing the *right thing*
  - by alignment of understanding



# Working as a Team

- Learning techniques from each other
  - osmotically, implicitly, explicitly
- Sense of 'teamness'
- Shared food, music, good times







“Who is the most important process person?  
The one who arranges the furniture.”

-- Gerald M. Weinberg



“It's easier to get forgiveness  
than permission.”

-- Grace Hopper











# Common Areas at the Heart

George Dinwiddie

*Software Development Consultant and Coach*

iDIA Computing, LLC

<http://idiacomputing.com/>

<http://blog.gdinwiddie.com/>

